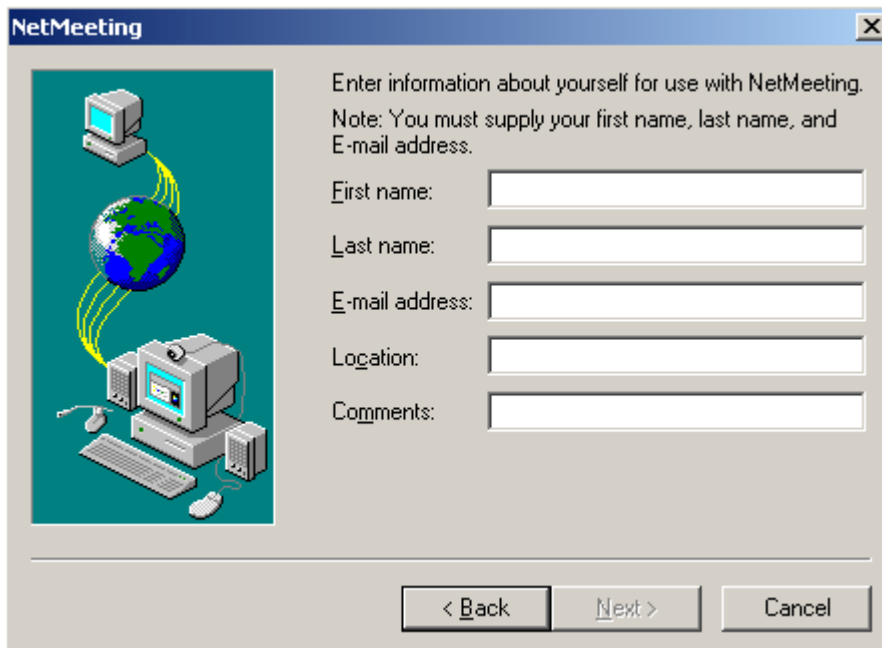


Remotely Control a PC Using Netmeeting.

1. Select Start > Run and in the box type **conf** and hit Enter.
2. If this is the first time you've ever loaded Netmeeting you will be prompted to enter some information. Please step through the prompts answering the questions to the best of your knowledge.



The screenshot shows a Windows dialog box titled "NetMeeting". On the left side, there is a graphic of a globe with two computer monitors connected by yellow lines, symbolizing remote communication. On the right side, the text reads: "Enter information about yourself for use with NetMeeting. Note: You must supply your first name, last name, and E-mail address." Below this text are five input fields: "First name:", "Last name:", "E-mail address:", "Location:", and "Comments:". At the bottom of the dialog box, there are three buttons: "< Back", "Next >", and "Cancel".



NetMeeting



Specify the speed of your connection to the network you will be using to make NetMeeting calls.

- 14400 bps modem
- 28800 bps or faster modem
- Cable, xDSL or ISDN
- Local Area Network

< Back Next > Cancel

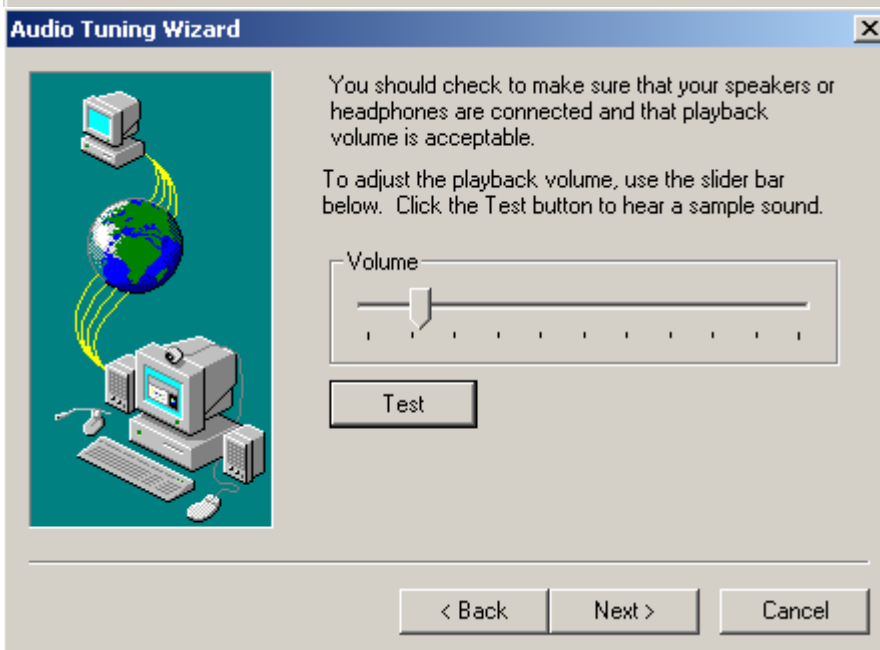
NetMeeting



To help make NetMeeting easier to find, you can put a shortcut on your desktop, and/or on the Quick Launch portion of your taskbar.

- Put a shortcut to NetMeeting on my desktop.
- Put a shortcut to NetMeeting on my Quick Launch bar.

< Back Next > Cancel

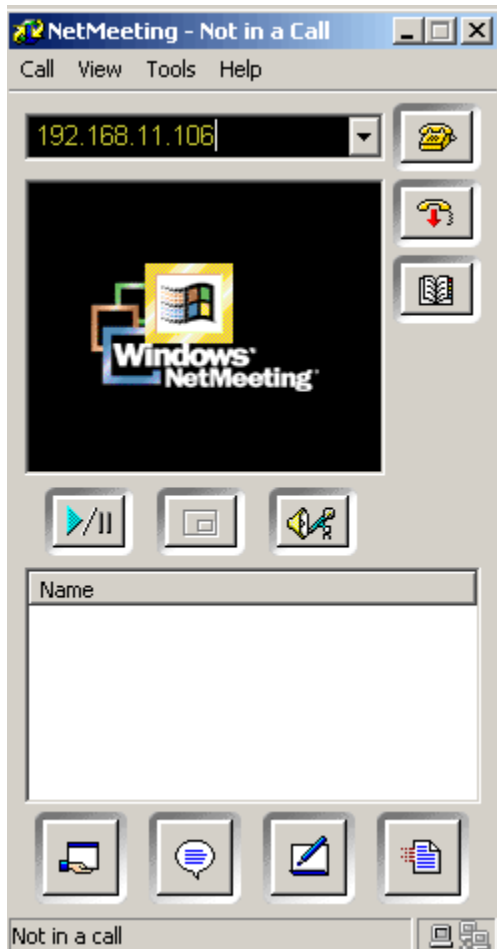


Plug in your

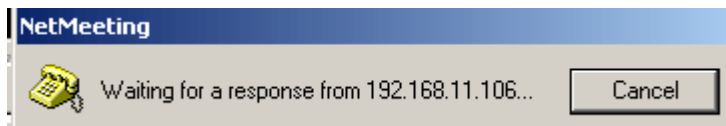
Plug in your microphone or you will get this box



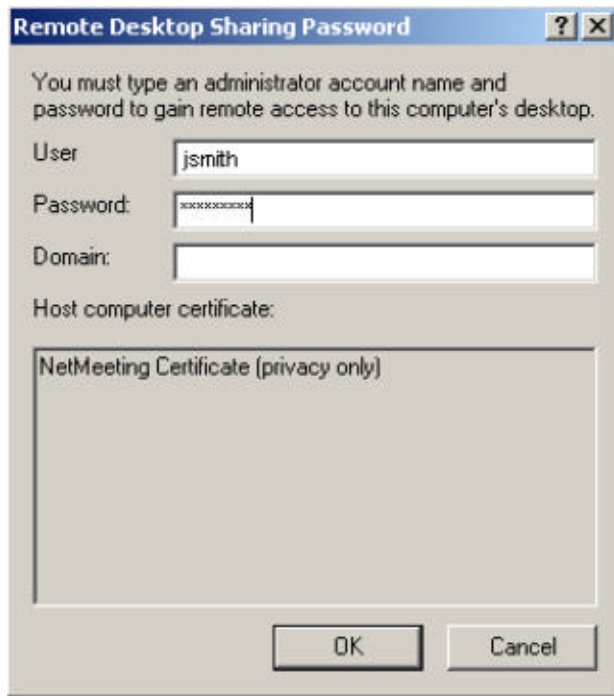
3. On most pages the defaults will work and you can just hit Next. When you have completed the setup your window should look like the following.



4. In the top window enter the IP address of the computer you would like to connect to. In this case the IP address is 192.168.11.106 Click on the phone to the right of the dialog box. You will see a window like this....



5. You will then be prompted for a username and password. Enter the information provided to you and click OK.



6. You are now connected to the machine in question. You will probably have to click on one of the names to login. You should use the same user that you logged into Netmeeting with.
7. Now you can make the screen full screen by going to **View > Full Screen** or choose **ALT + ENTER** on your keyboard.

When you are done on the computer you can disconnect by choosing the **End Call** button on the netmeeting box.

If you have any questions regarding this doc, please give us a call for help.
407-540-0474

Modomo Technology and Web Services Inc.

